

A3

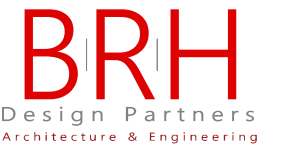
**IMPORTANT TO BE READ**

- Copyright of this drawing is reserved by BRH Architecture and Engineering.
- All construction methods, materials, installations to be in accordance with all building regulations and codes of practice at the time of construction.
- All sub-contractors are ultimately responsible for ensuring compliance with regulations within their own trade.
- The user of this drawing shall cross-check dimensions shown on this drawing with relevant dimensions shown on other drawings issued by BRH Architecture and Engineering and by other design consultants relevant to the project prior to any fabrication or construction on site. All errors, omissions and discovered inconsistencies to be reported to the BRH Architecture and Engineering immediately.
- All trades to check dimensions on site prior to fabrication.
- Drawings show design intent only.
- Do not scale dimensions from the drawing.
- This drawing should not be reproduced without written prior consent from the copyright owner.
- This drawing is specific to the job outlined in the title box below.

**PART V - 20% SOCIAL & AFFORDABLE ALLOCATION 29 UNITS:**

1	Apt. 4	83.64	2 bed Apt.
2	Apt. 5	78.8	2 bed Apt.
3	Apt. 19	83.64	2 bed Apt.
4	Apt. 20	78.8	2 bed Apt.
5	Apt. 9	83.64	2 bed Apt.
6	Apt. 10	78.8	2 bed Apt.
7	Apt. 24	83.64	2 bed Apt.
8	Apt. 25	78.8	2 bed Apt.
9	House 11	103.7	3 Bed House
10	House 12	103.7	3 Bed House
11	House 17	125.3	3 Bed House
12	House 20	125.3	3 Bed House
13	House 23	125.3	3 Bed House
14	House 26	125.3	3 Bed House
15	House 30	108.2	3 Bed House
16	House 31	108.2	3 Bed House
17	House 36	108.2	3 Bed House
18	House 37	108.2	3 Bed House
19	House 51	88.0	2 Bed House
20	House 52	88.0	2 Bed House
21	House 67	80.0	2 Bed House
22	House 69	80.0	2 Bed House
23	House 82	80.0	2 Bed House
24	House 83	80.0	2 Bed House
25	House 84	80.0	2 Bed House
26	House 103	114.7	3 Bed House
27	House 106	114.7	3 Bed House
28	House 109	114.7	3 Bed House
29	House 112	114.7	3 Bed House

2	ISSUED FOR PLANNING	15/09/2021	MB
1	ISSUED FOR PLANNING	01/02/2021	MB
Rev	DETAIL	DATE	BY



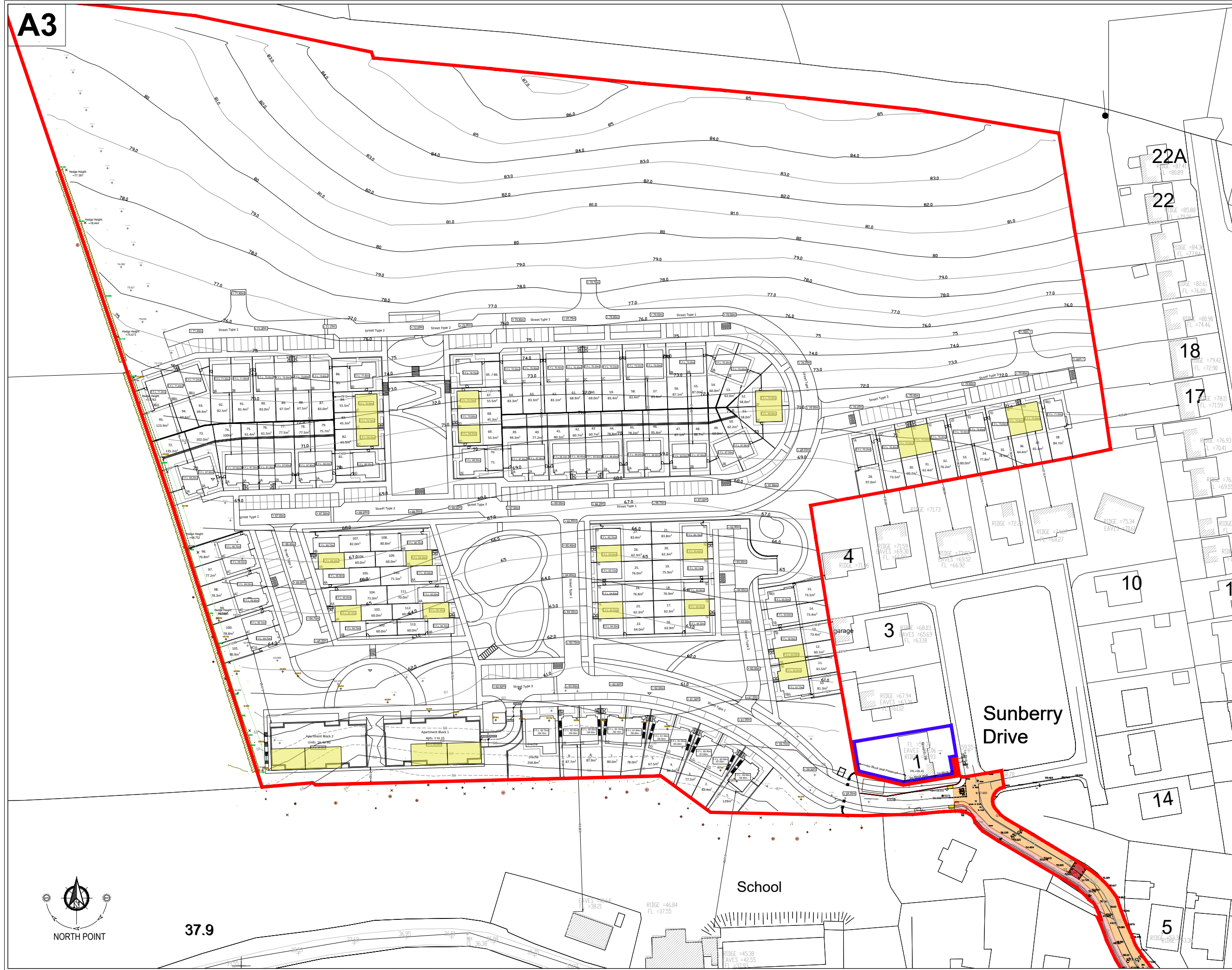
Phoenix House, Monahan Road, Cork.  
T-021 2376150 E: info@brh.ie

CLIENT: Eoin Sheehan

PROJECT: Residential Development at Monacnapa, Blarney, Co. Cork

DRG: Part V - Allocation Site Layout

Drawn By:	Checked By:	Job No:	Drawing Number:	Revision:	Stage:
JP	MB	21_001	P-11	2	PA
SCALE:					
1:1250 on A3					



37.9